

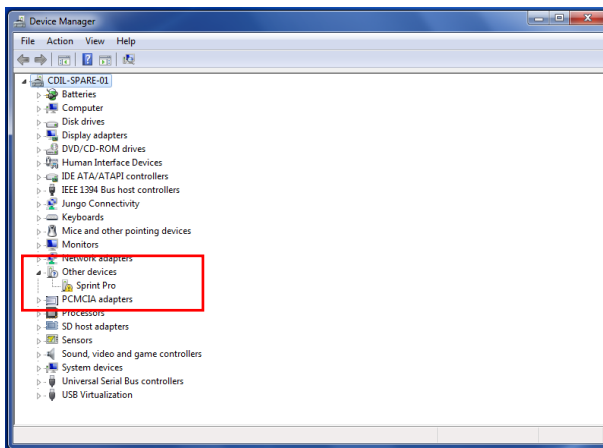
Installing Sprint-Pro USB Drivers

Windows 10

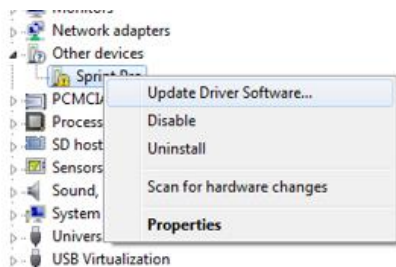
- 1) Turn on the Sprint Pro & connect it to the PC with the USB cable.
- 2) Windows 10 will install drivers and function without further driver install.

Windows 7

- 1) Turn on the Sprint Pro & connect it to the PC with the USB cable.
- 2) Open Device Manager (**Windows logo key + R**, then type “**devmgmt.msc**” and press **Enter**).
- 3) Select the Sprint Pro device (it will be marked with a warning triangle).

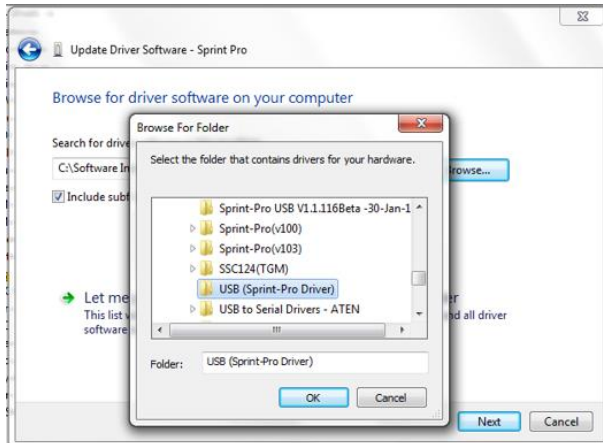


- 4) Right click on the Sprint-Pro device and select “**Update Driver Software**”.

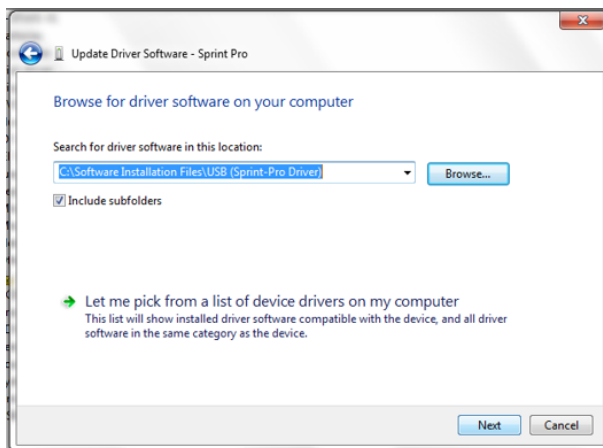


Installing Sprint-Pro USB Drivers

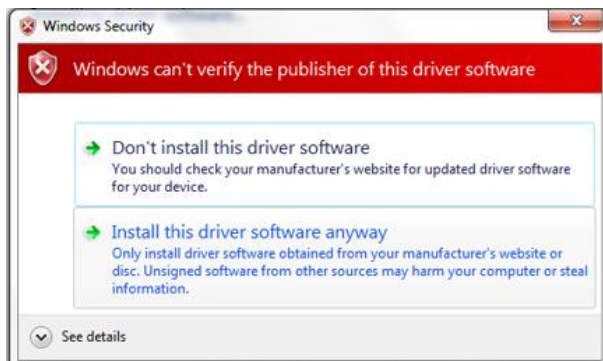
- 5) Select “**Browse my computer for driver software**” and locate the folder containing the “**Sprint-Pro.inf**” file, then click **OK**.



- 6) Click **Next** to start the driver installation.

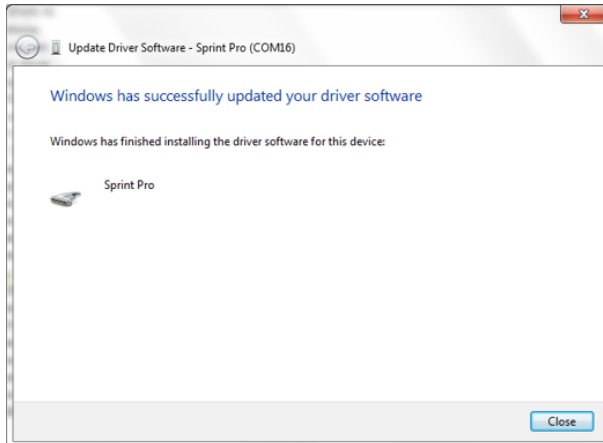


- 7) When the Security window appears, click on “**Install this driver software anyway**”.

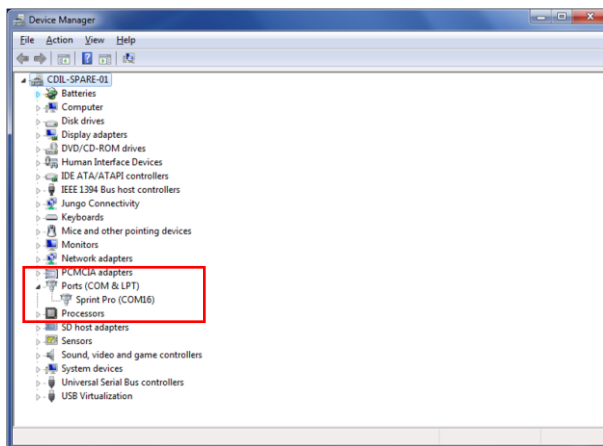


Installing Sprint-Pro USB Drivers

- 8) When the driver installation has completed, click on **Close**.



- 9) Check that the driver has installed correctly – under “**Ports (COM & LPT)**”, the warning Triangle should have disappeared and the driver name should be “**Sprint-Pro (COMxx)**”.



- 10) Close the Device Manager window.